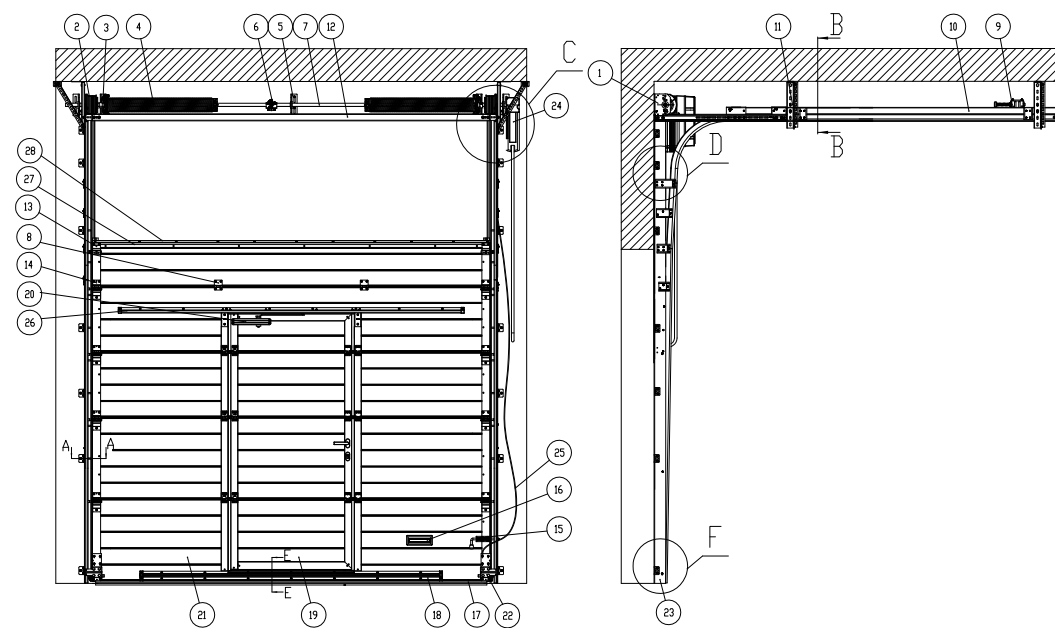


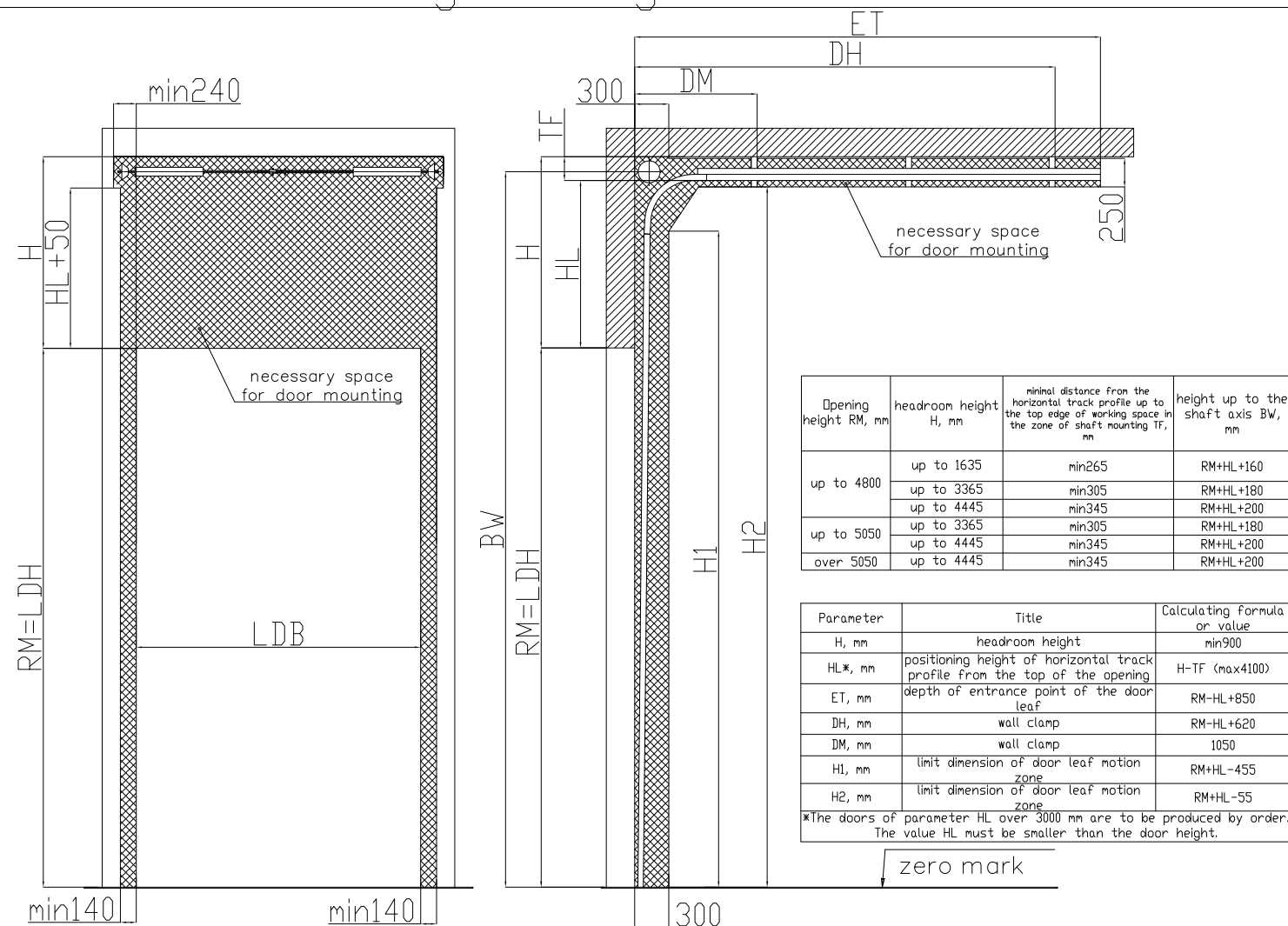
High mounting with top shaft positioning

Description of door construction with a wicket



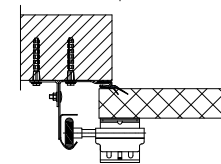
#	Title	Code number
1	torsion bracket	TB1540
2	Chain drum	CD054H
3	spring break device	SPB-1
4	spring	TS460/Stx1700
5	intermediate bracket	IB-86
6	couple adjustable	AC-1
7	shaft	TSH
8	intermediate hinge	IHI13
9	spring bumper bracket	SB-485
10	horizontal track profile	PRG3
11	telescopic bracket	K35-KV6
12	headroom	PRG7N
13	upper roller bracket	RB1125
14	side roller bracket	RB1123
15	slide bolt	SB0100
16	handle	HG1007
17	bottom seal	RSB10
18	reinforcing profile	PRG-12
19	wicket	
20	dowr pusher sliding rod	DP0207
21	section	
22	bottom roller bracket with safety block against steel rope tearing	RB1446
23	vertical track profile	
24	electrical drive	Dynamic xs. plus
25	steel drive	105610
26	reinforcing profile	PRG-17
27	top profile	PRG-14
28	top seal	RST01

Mounting drawing of the door

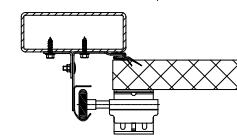


A(5:1)
Mounting types of vertical
track profiles:

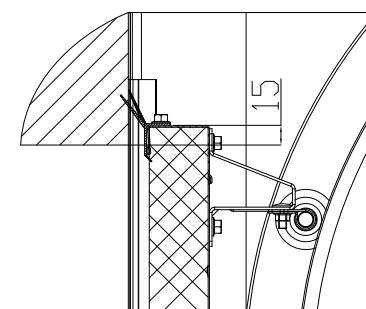
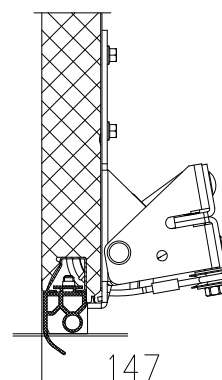
a) mounting to the wall,
triangular plate B0300 outside
the track profile



c) mounting to the tube,
triangular plate B0300
outside the track profile

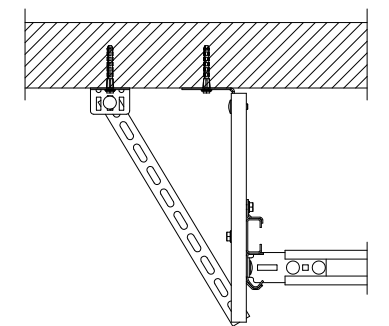


D(10:1)
place of door leaf adjoining to the
headroom

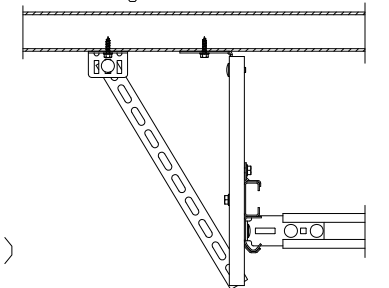
 $F(10:1)$ 

B(5:1)
Mounting types of lifting bars of
horizontal track profiles:

a) mounting to the ceiling



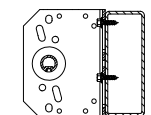
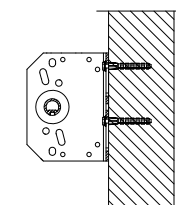
b) mounting to the tube



G-G(5:1)

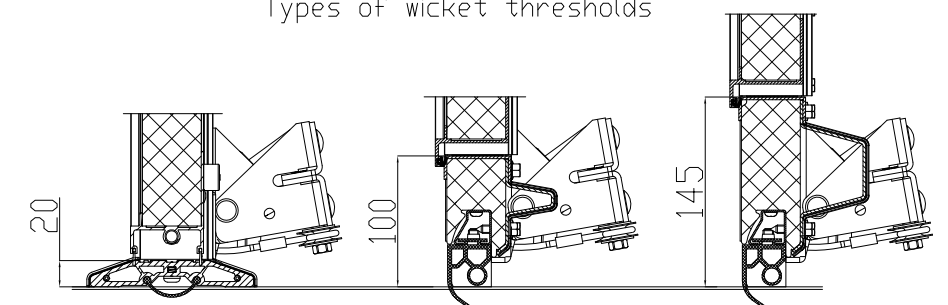
Mounting types of intermediate brackets

a) mounting to the headroom b) mounting to the tube



E<10:1>

Types of wicket thresholds



a) flat threshold

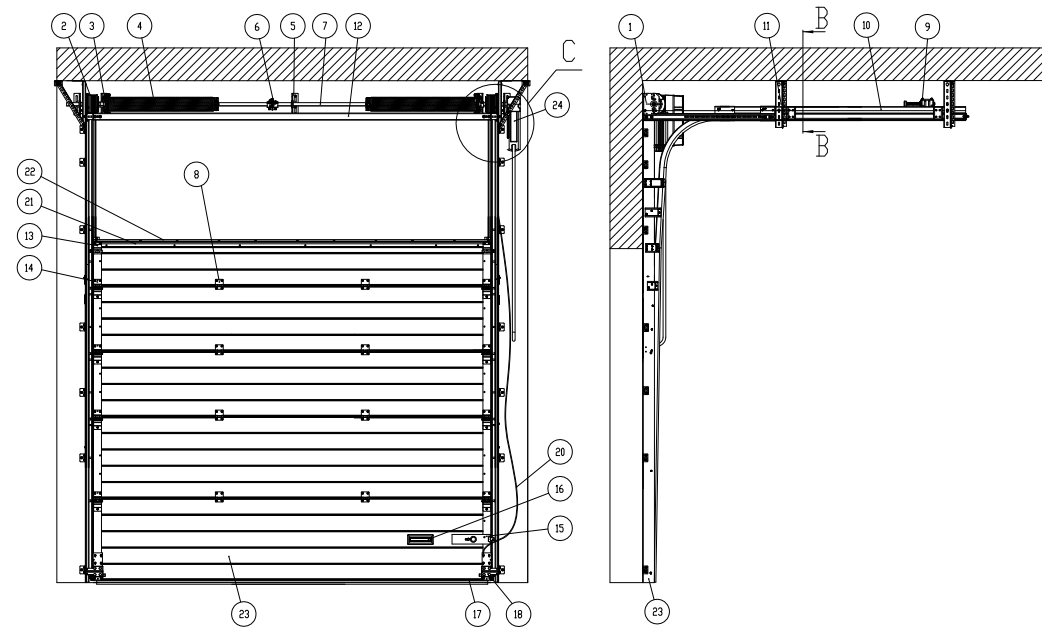
b) low threshold

c) standard threshold

Industrial doors

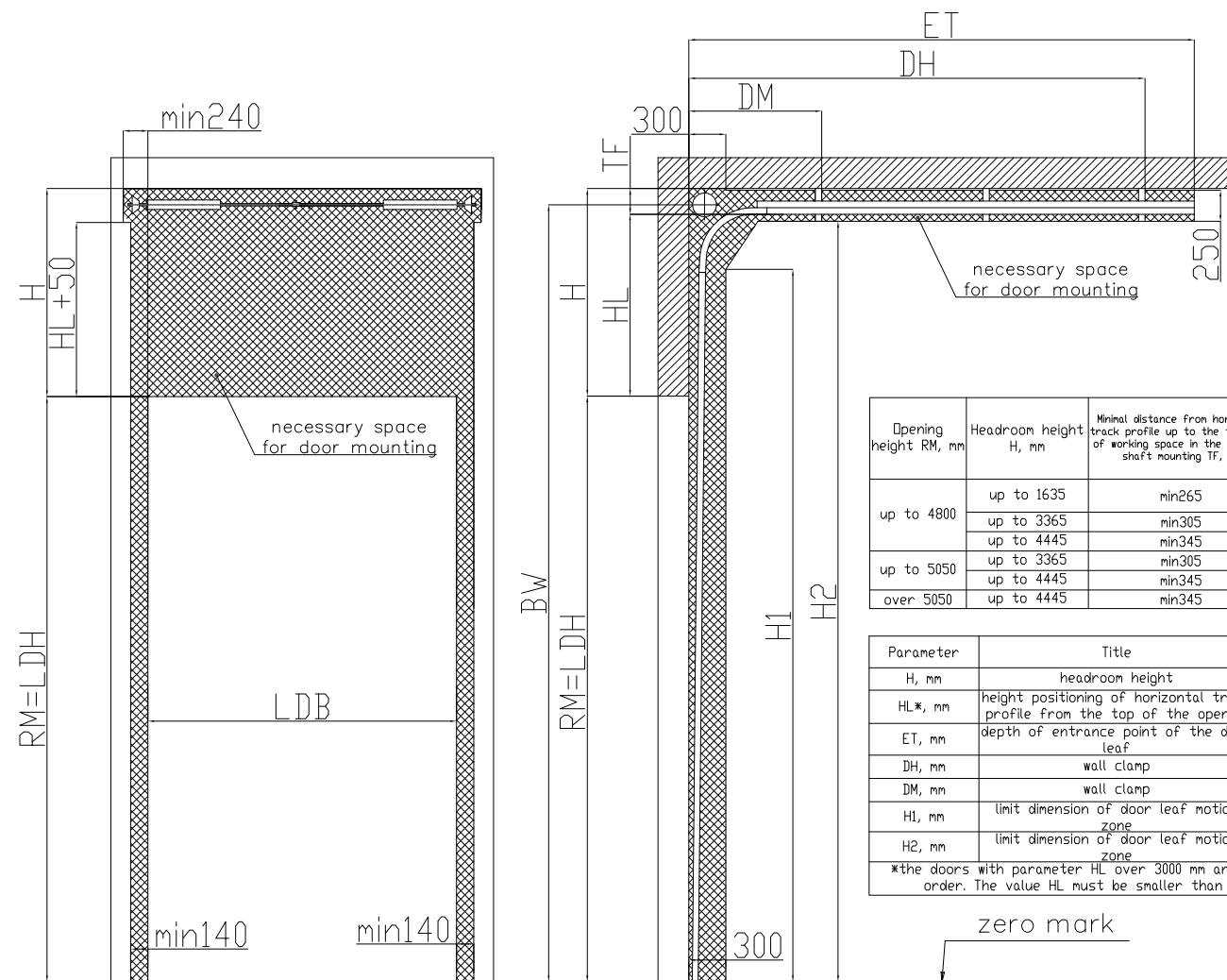
High mounting with top shaft positioning

Description of door construction without wicket



№	Title	Code number
1	torsion bracket	TB1540
2	chain drum	CD054H
3	spring break device	SB0-1
4	spring	TS460x51x1700
5	intermediate bracket	IB-86
6	couple adjustable	AC-1
7	shaft	TSH
8	intermediate hinge	IHI13
9	spring bumper bracket	SB-485
10	horizontal track profile	PRG3
11	telescopic bracket	K35-KV6
12	headroom	PRG7N
13	upper roller bracket	RB1125
14	side roller bracket	RB1123
15	slide bolt	LR10103
16	handle	HC1007
17	bottom seal	RSB10
18	bottom roller bracket w/it safety lock against steel rope tearing	RB1446
19	vertical track profile	
20	steel rope	105610
21	top profile	PRG-14
22	top seal	RST01
23	section	
24	electrical drive	Dynamic xs. plus

Mounting drawing of the door



Opening height RM, mm	Headroom height H, mm	Minimal distance from horizontal track profile up to the top edge of working space in the zone of shaft mounting TF, mm	Height up to shaft axis BW, mm
up to 4800	up to 1635	min265	RM+HL+160
	up to 3365	min305	RM+HL+180
	up to 4445	min345	RM+HL+200
up to 5050	up to 3365	min305	RM+HL+180
	up to 4445	min345	RM+HL+200
over 5050	up to 4445	min345	RM+HL+200

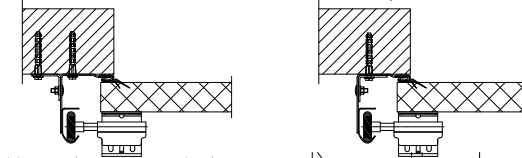
Parameter	Title	Calculating formula or value
H, mm	headroom height	min900
HL*, mm	height positioning of horizontal track profile from the top of the opening	H-TF (max4100)
ET, mm	depth of entrance point of the door leaf	RM-HL+850
DH, mm	wall clamp	RM-HL+620
DM, mm	wall clamp	1050
H1, mm	limit dimension of door leaf motion zone	RM+HL-455
H2, mm	limit dimension of door leaf motion zone	RM+HL-55

*the doors with parameter HL over 3000 mm are to be produced by order. The value HL must be smaller than the door height.

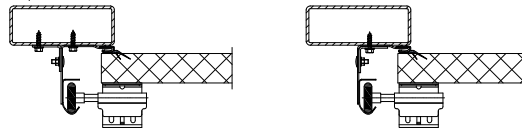
A(5:1)

Mounting types of vertical track profiles:

a) mounting to the wall, angle outside the track profile
b) mounting to the wall, angle inside the track profile

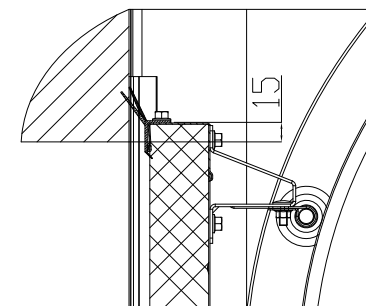


c) mounting to the tube, angle outside the track profile
d) mounting to the tube, angle inside the track profile



D(10:1)

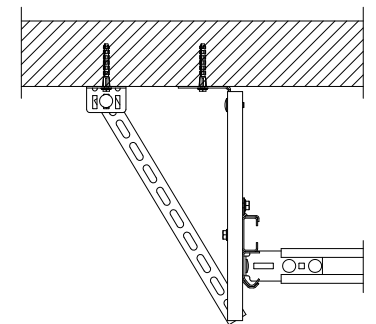
place of door leaf adjoining to the headroom



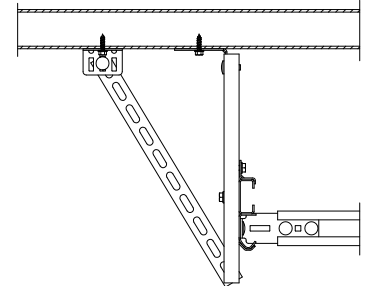
B(5:1)

Mounting types of lifting bars of horizontal track profiles:

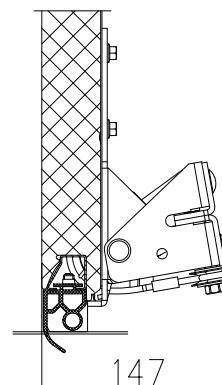
a) mounting to the ceiling



b) mounting to the tube



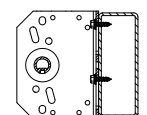
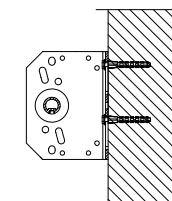
F(10:1)



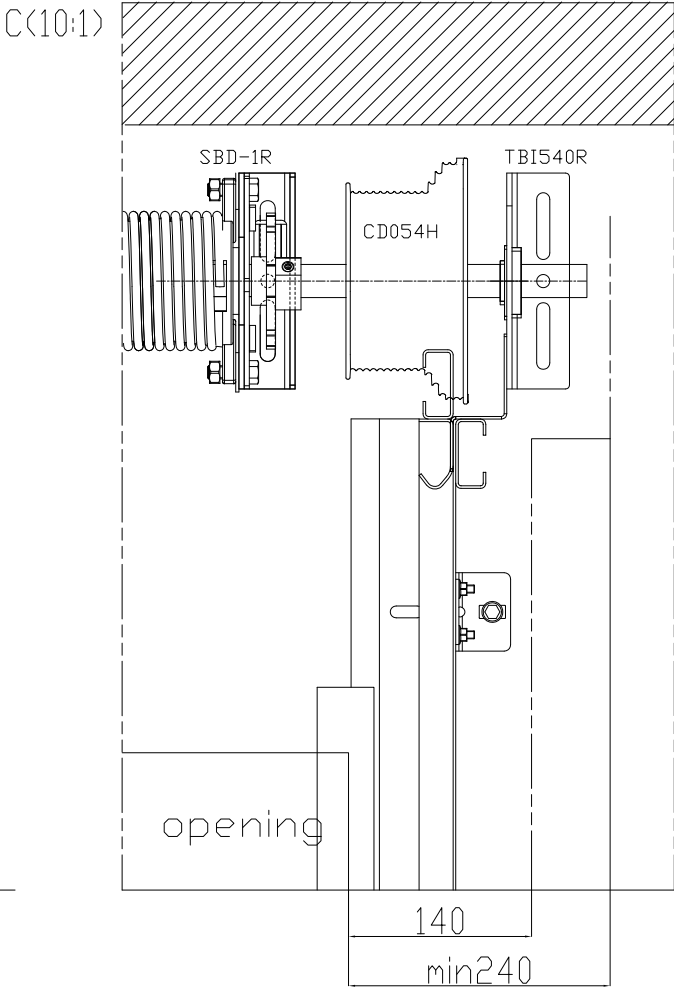
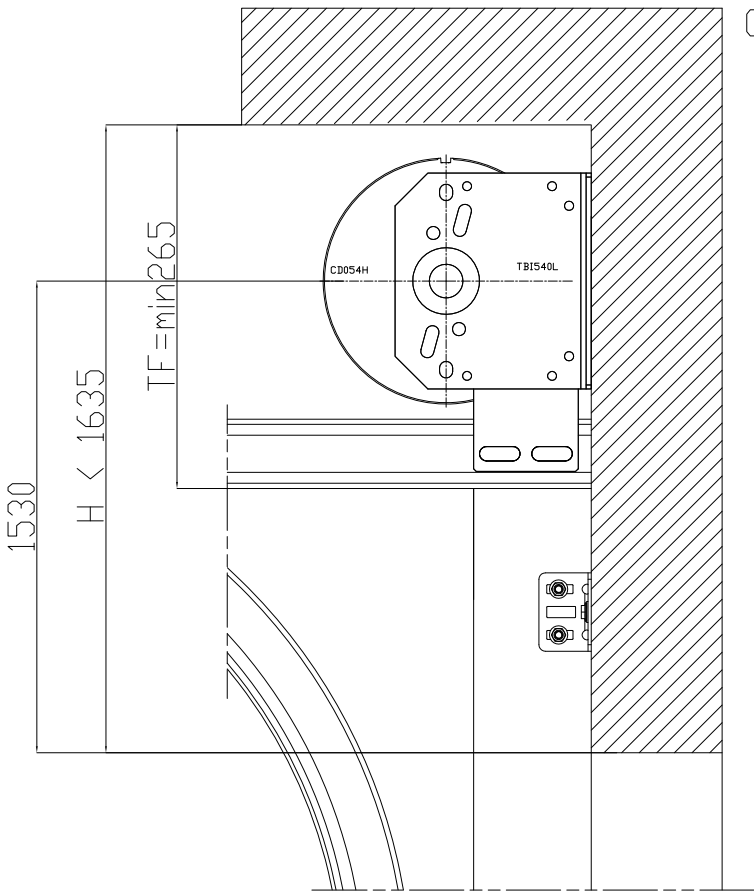
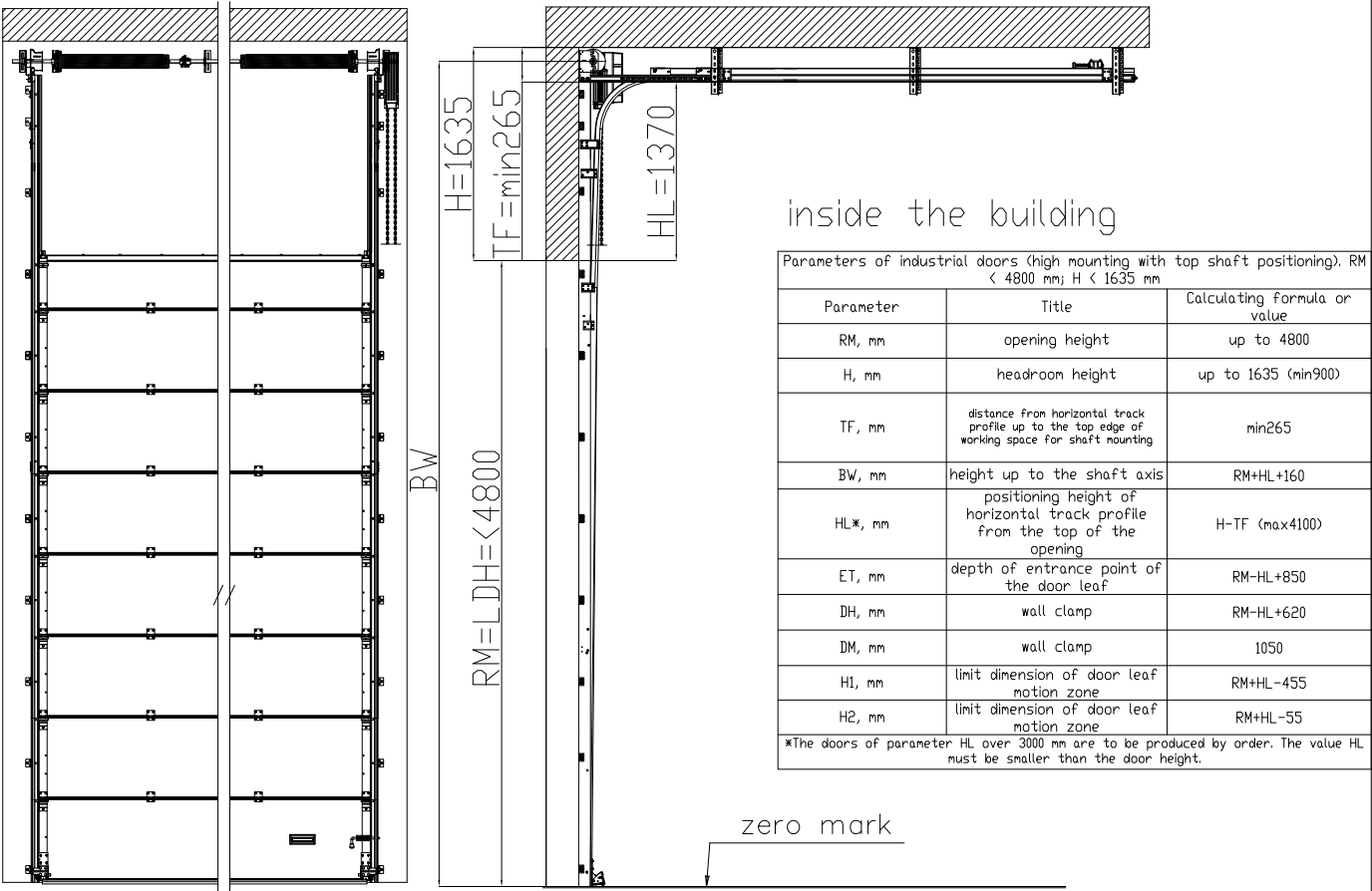
G-G(5:1)

Mounting types of intermediate brackets:

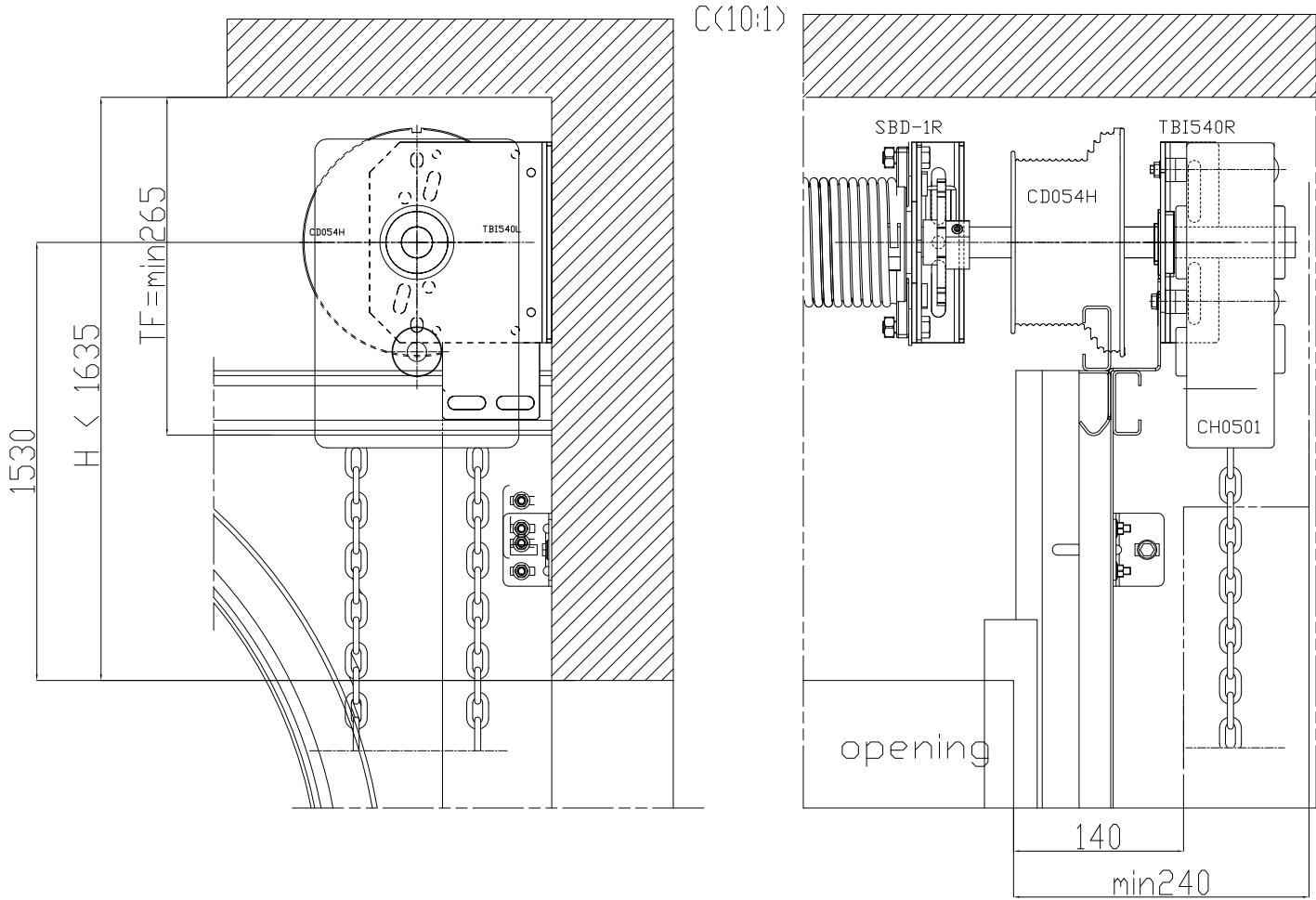
a) mounting to the headroom b) mounting to the tube



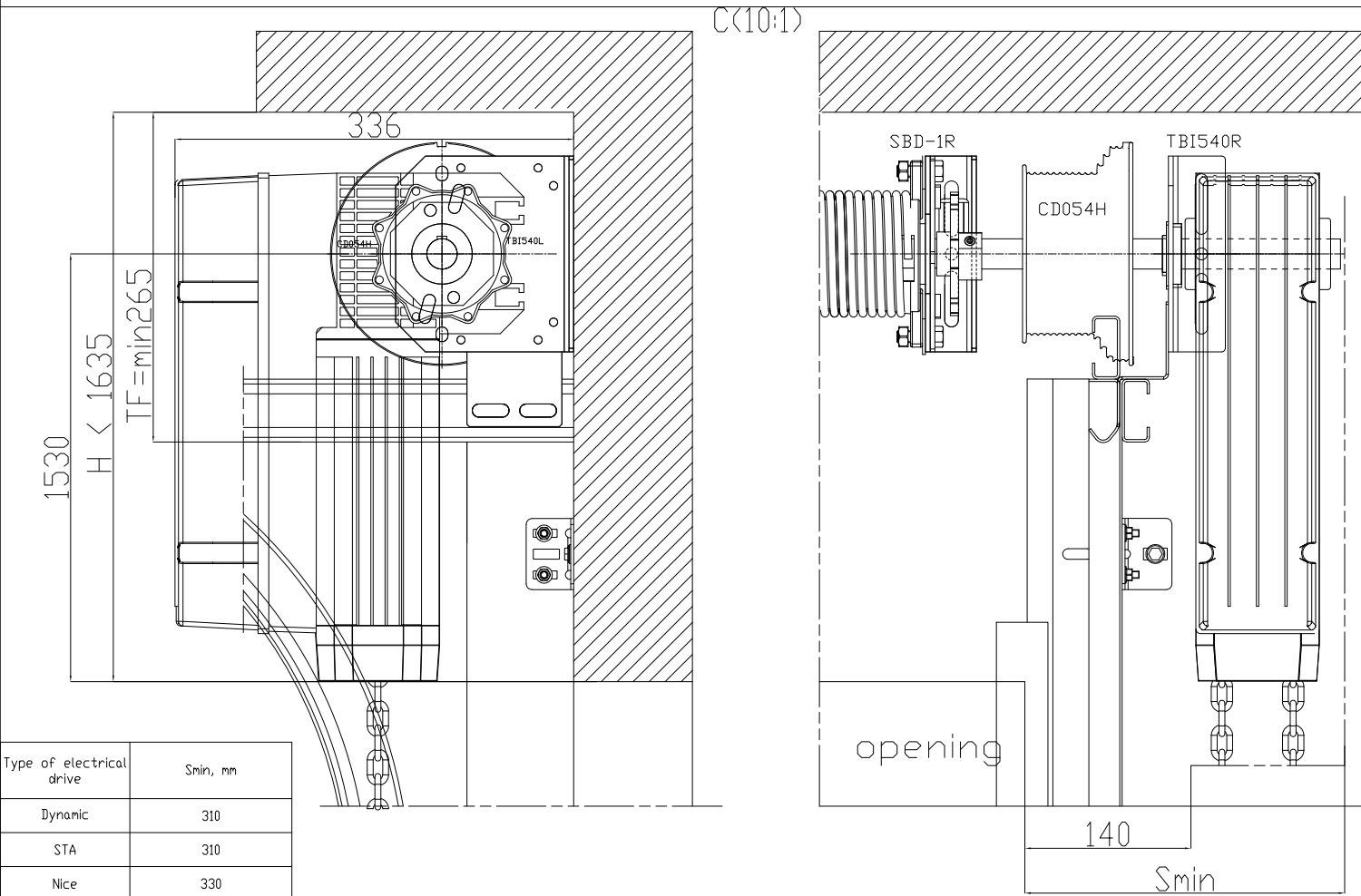
Door height up to 4800 mm, headroom height up to 1635 mm. Chain drum CD054H



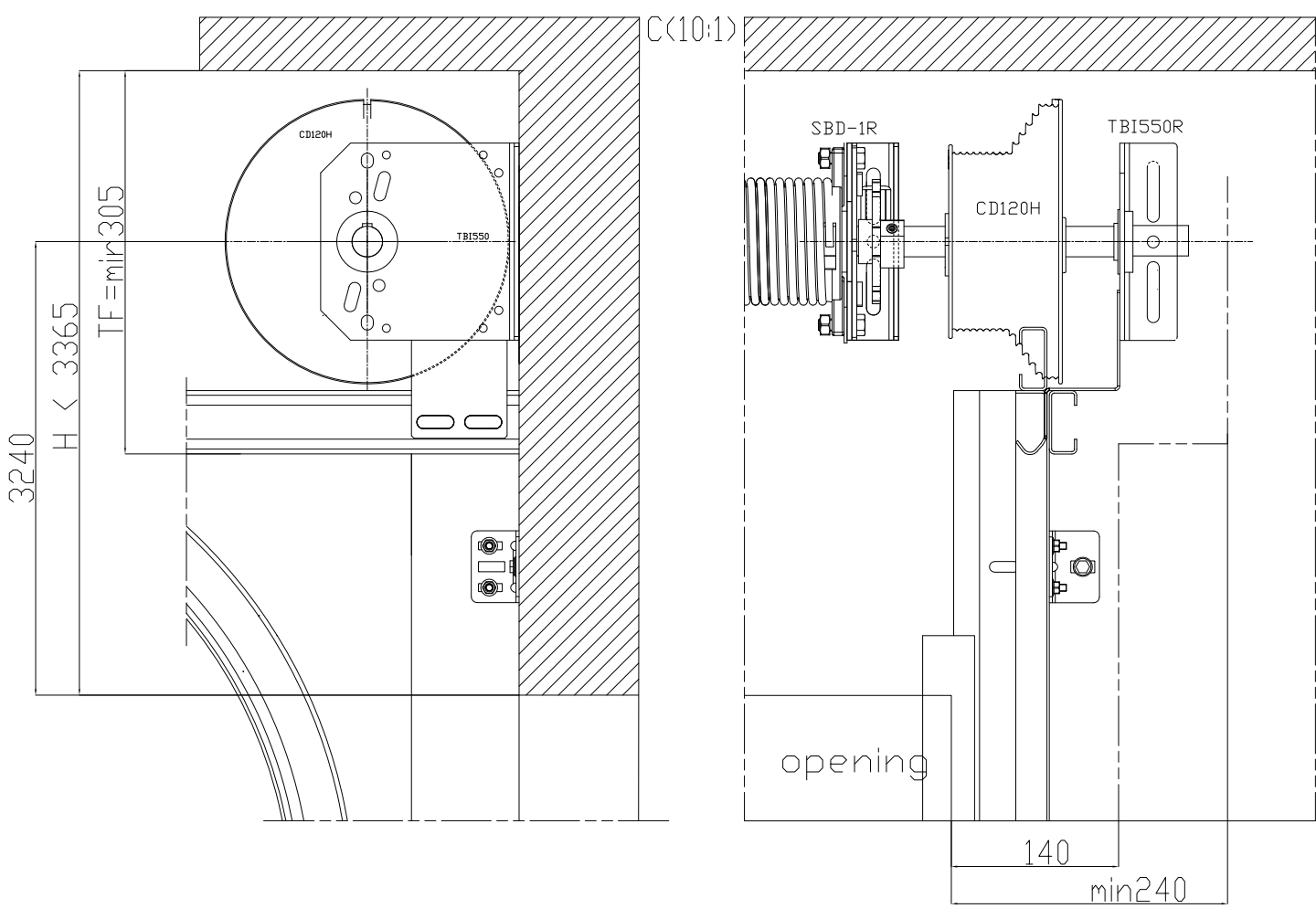
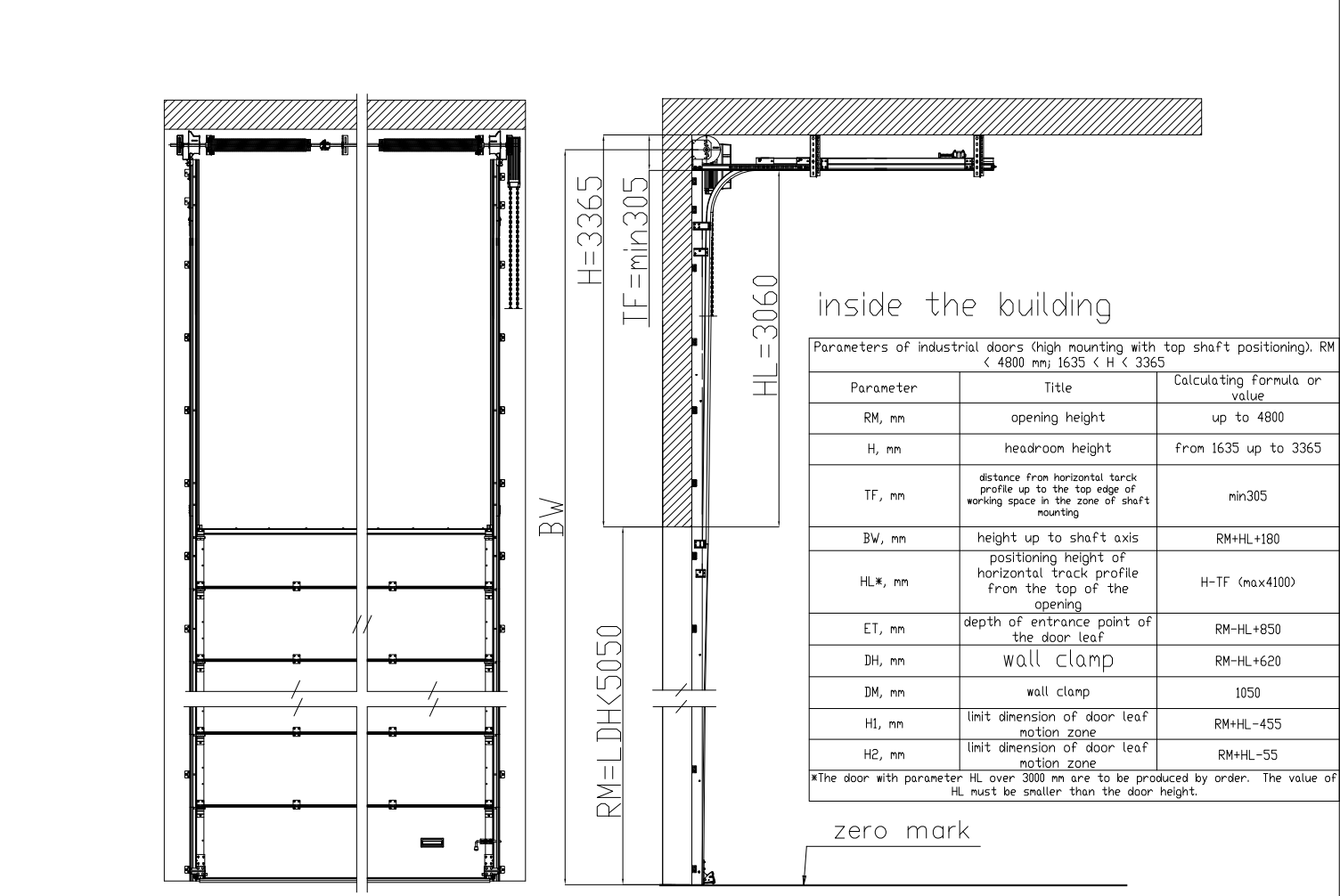
Additional parameters of the opening when using a chain drive of type CH0501.



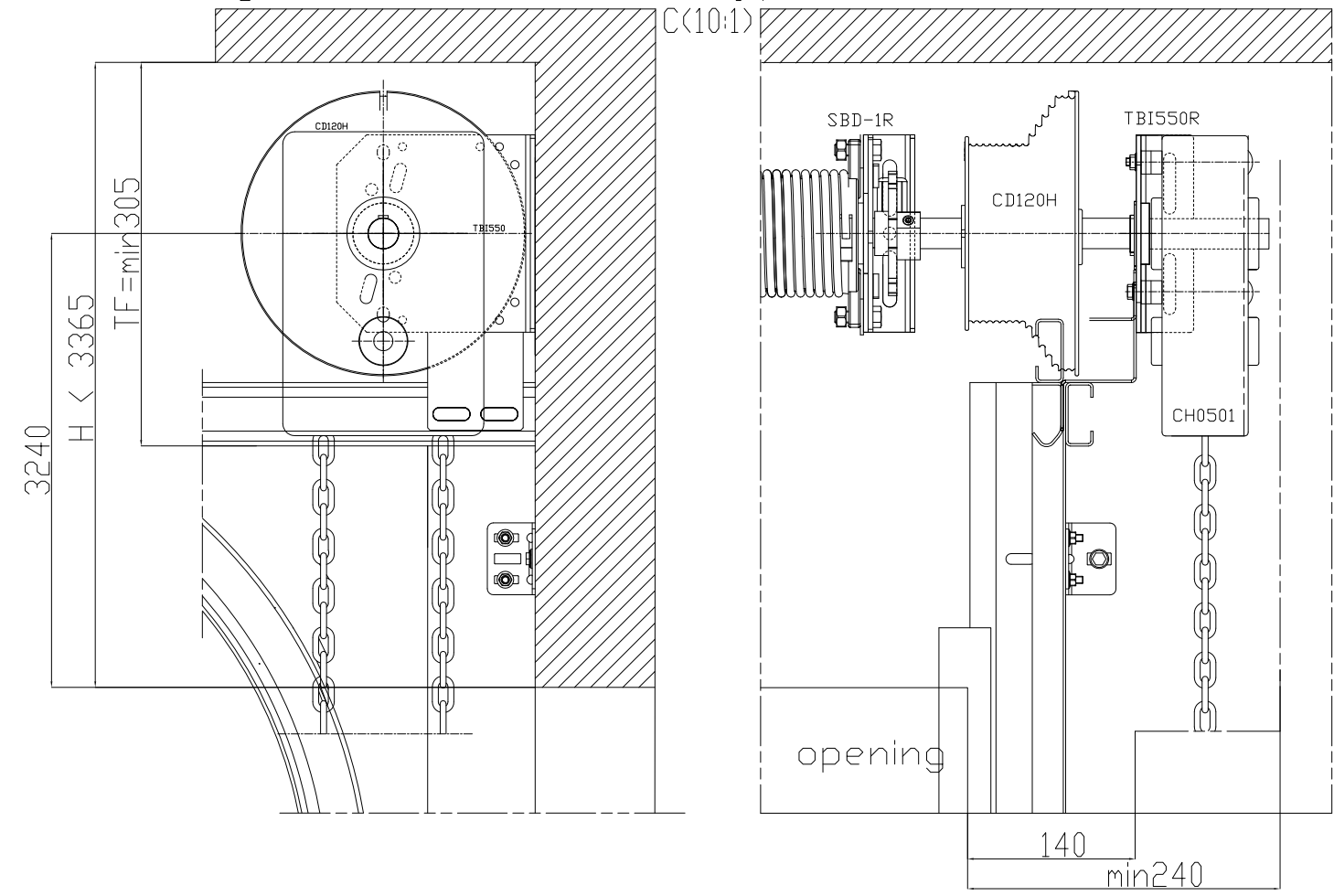
Additional parameters of the opening when using an electrical drive fixed on the door shaft



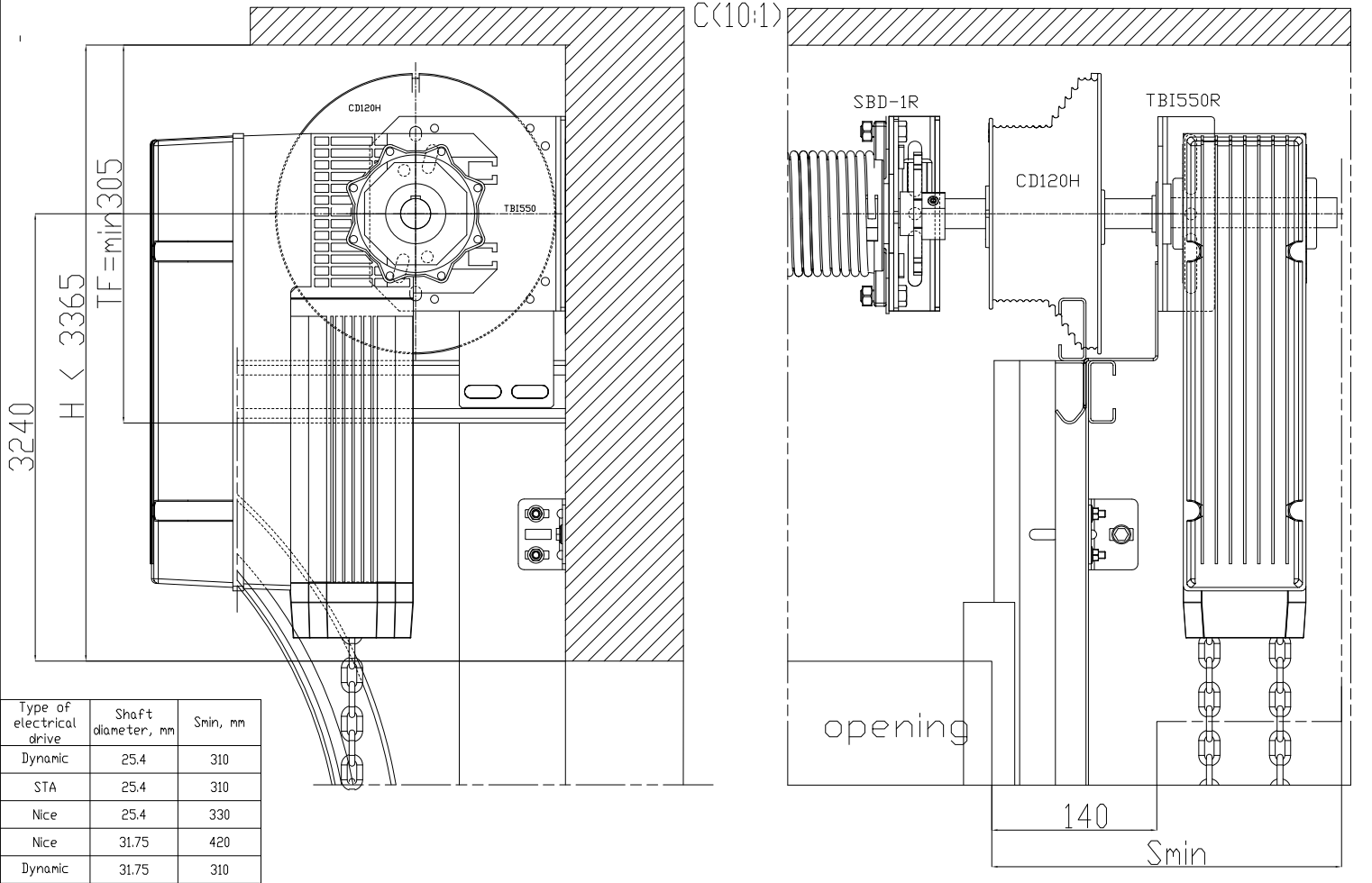
Door height up to 5050 mm, headroom height up to 3365 mm. Chain drum CD120H



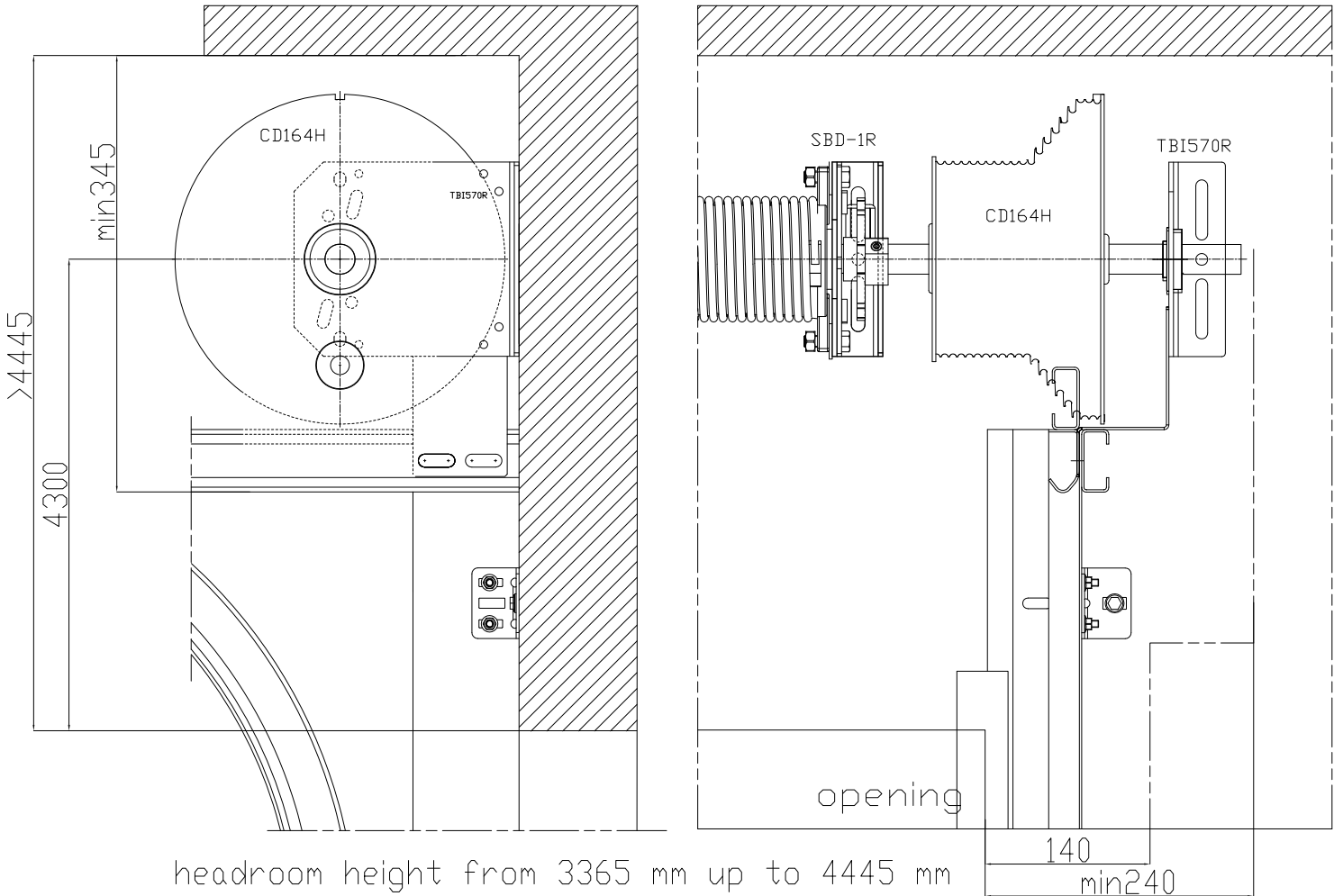
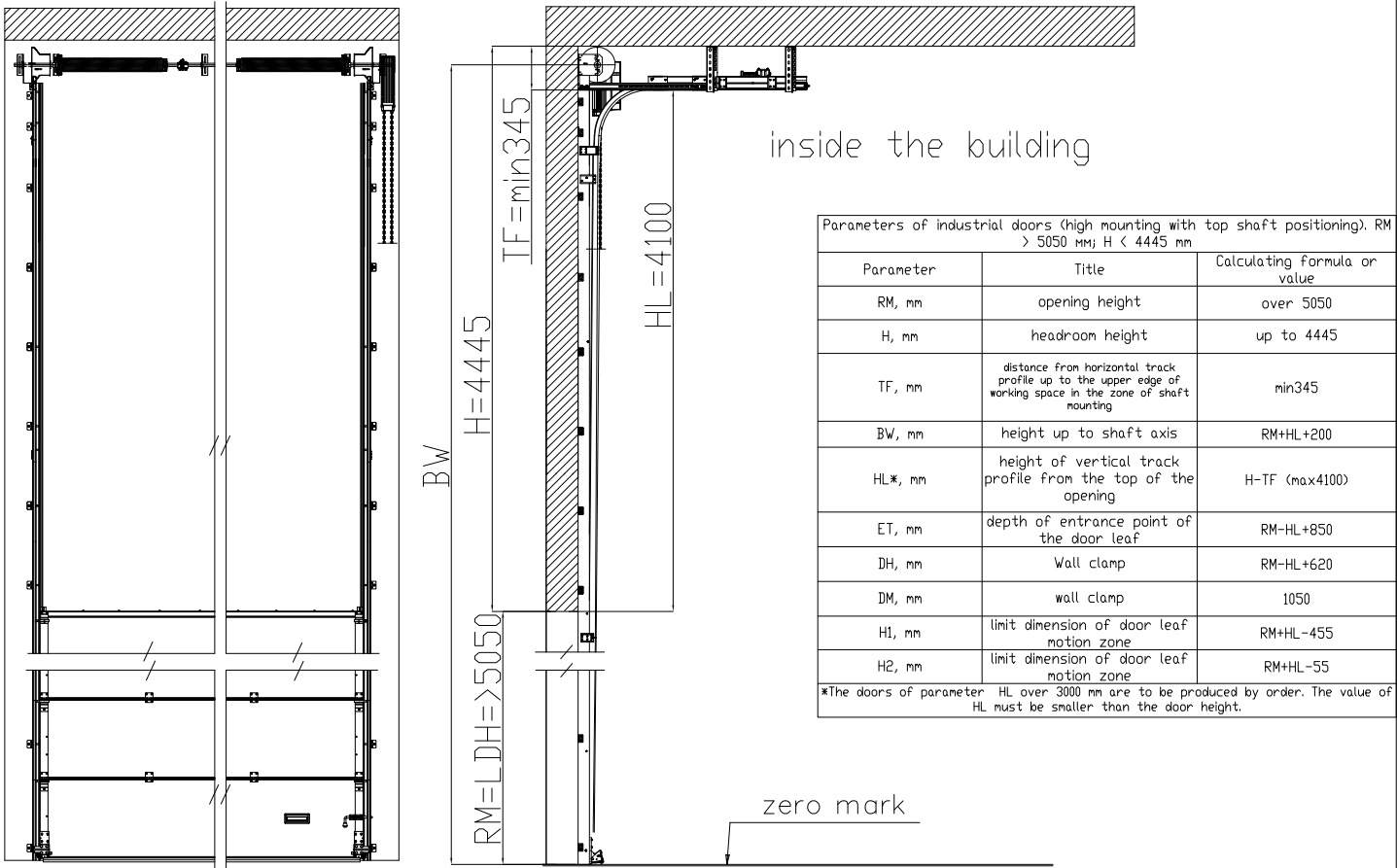
Additional parameters of the opening when using a chain drive of type CH0501.



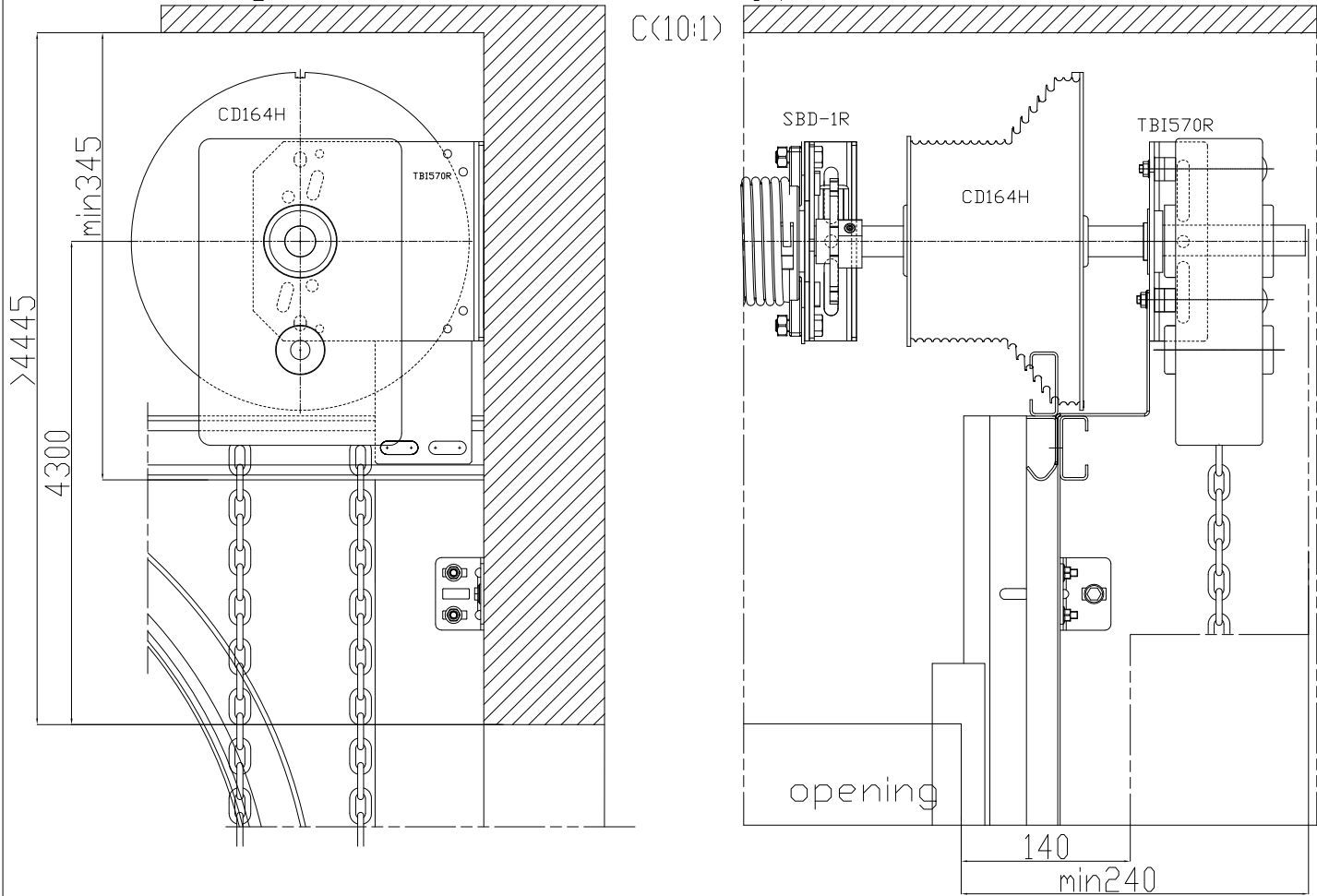
Additional parameters of the opening when using an electrical drive fixed on the door shaft



Door height over 5050 mm, headroom height up to 4445 mm. Chain drum CD164H



Additional parameters of the opening when using a chain drive of type CH0501.



Additional parameter of the opening when using an electrical drive fixed on the door shaft

